



SPRINGSUN TECHNOLOGY INDIA

Indoor Full Color LED Curtain Solution Designed SPRINGSUN

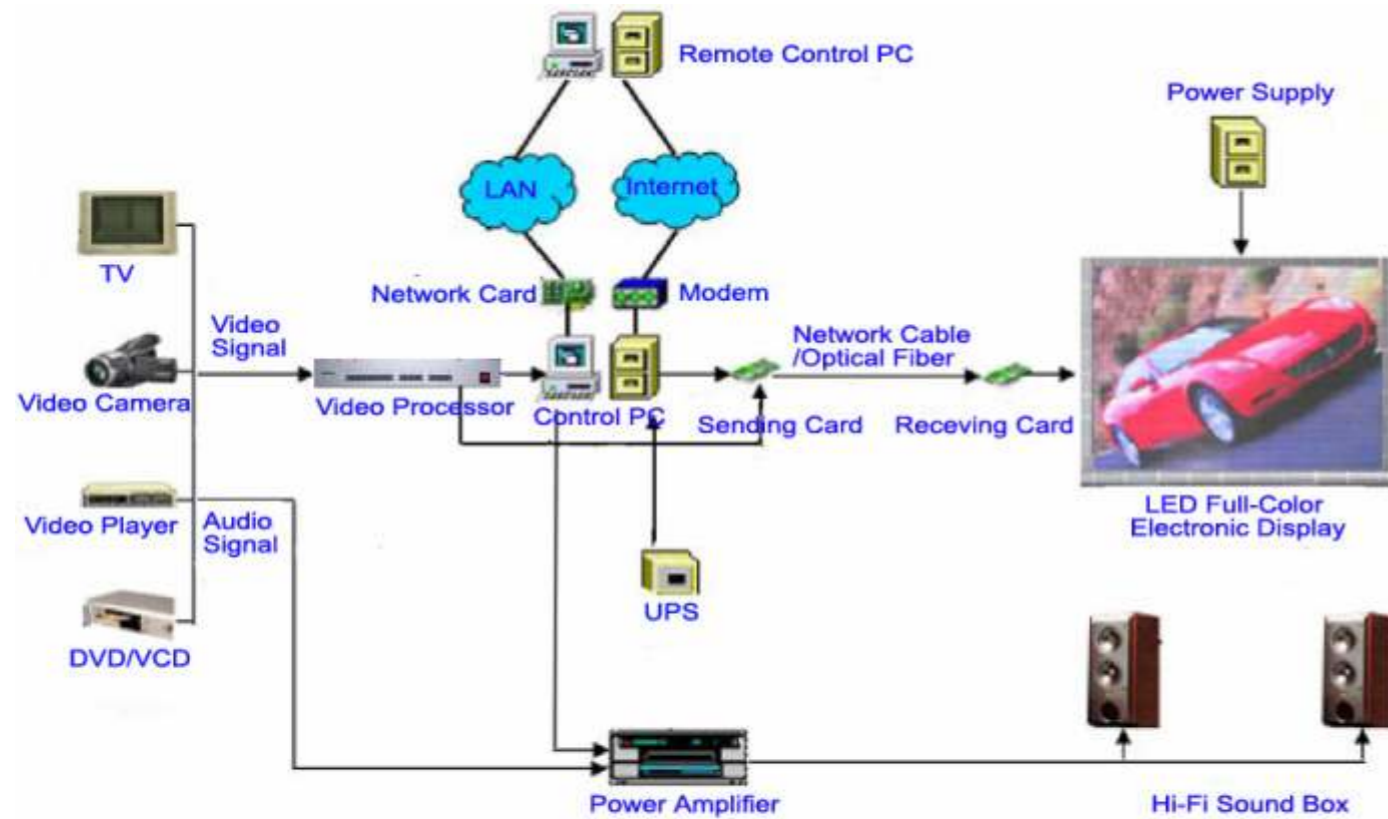


10 feet by 9 feet PH12.5 mm SMD Indoor Full Color LED Curtain*

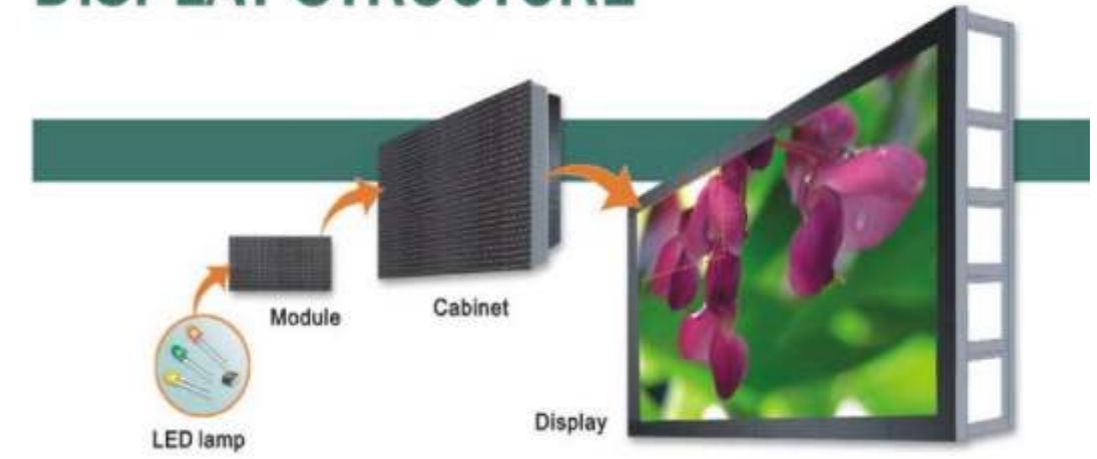
* This is not actual appearance of 10 x 9 PH 12.5 mm SMD LED board. Appearance and clarity may vary.

Address: Springsun Technology India, 11/1, Arunachal Nagar, Navavur Pirivu, Vadavalli, Coimbatore - 41.
Mobile : 98942 60909, 96292 00000 E-Mail : springsunindia@gmail.com

◆ LED Display System Overview



DISPLAY STRUCTURE



1. LED Display System is a multimedia hi- tech product that blended optical, electronic and acoustic signal processing technology, and it includes the followings:

- Display screen
- Controlling computer, communication system, System software & related peripheral equipments

2. System Features:

- Available for connection to an external scanner, and accepting various pictures, graphs and handwriting inputs.
- Accepting video signal (TV, VCR, DVD, etc), and showing dynamic images, and it also can show graphs and animations.
- The control computer can act as a workstation on network, and read real-time data from specified computer, and show then on its display.
- Various methods for images display, and easy replacement for arranged programs whenever (including play sequence, time length) etc.

◆ Outdoor & Indoor Full Color LED Display System

Outdoor & Indoor Full Color LED Display Screen System: Each pixel consists 2R1G1B/1R1G1B. With the speciality of waterproof, windproof, sunproof, staticproof, antifreezing, high brightness, its purpose is to propagandize outdoor & indoor advertising & play the important news, events, shows or TV program etc.